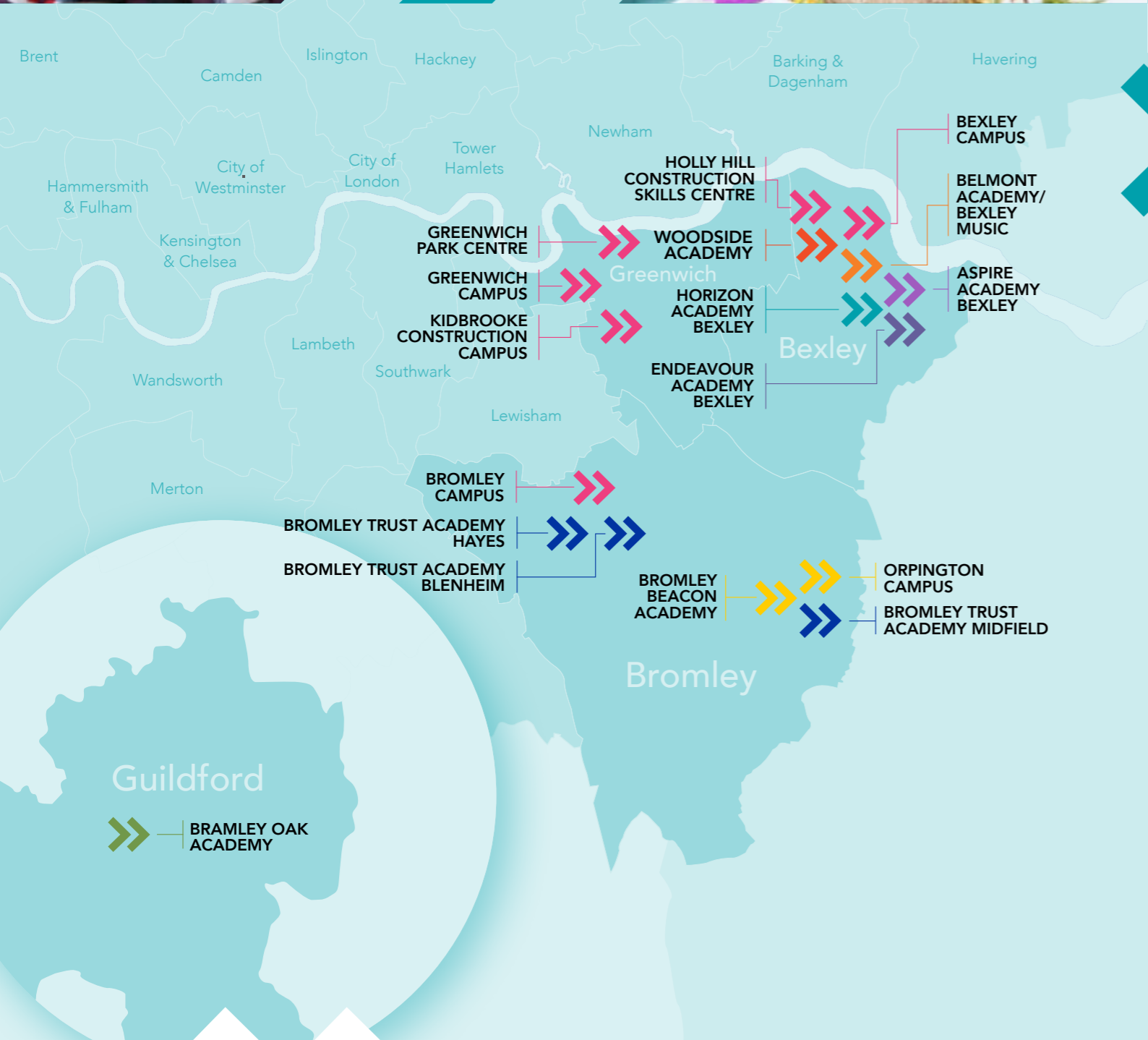


**LONDON
SOUTH EAST
ACADEMIES
TRUST**



PROSPECTUS



Welcome to London South East Academies Trust

We are a thriving Multi-Academy Trust with a network of Good and Outstanding Mainstream, Special and Alternative Provision schools across London, Kent and Surrey. Established in 2014, we are passionate about realising potential. Ambitious for every child, we work tirelessly to support our pupils throughout their educational journey and beyond; unlocking their unique talents and equipping them with the confidence and skills they need to be happy at school, progress and succeed at every level.

Our schools bring rich diversity, individuality and strengths to their wider communities. We work closely with parents/carers, our local authorities, educators and other stakeholders to positively impact the lives of all our pupils and their families. By learning and growing together, we share knowledge, experience and best practice; becoming greater than the sum of our parts.

This brochure sets out what we offer as a Trust and the opportunities for both children and young people and other schools who are considering joining our Trust family. From outstanding leadership, management and support to high quality teaching, learning and therapeutic services – we are proud of our dedicated and experienced staff who make a difference every single day.

We look forward to continuing our work to grow and strengthen education provision across the region. We are grateful for the ongoing support of everyone involved in our Trust and will be delighted to talk to you further about our work and the opportunities to join us.

With kindest regards,
Dr Sam Parrett CBE, CEO
Mark Burnett, Chair



Our history



The set-up of our Trust (originally named Bromley Educational Trust) was led by Bromley College of Further and Higher Education in 2014. We initially took on two failing schools from the Local Authority in 2015, both of which were at risk of closure but are now rated by Ofsted as Good with outstanding features, following inspections in 2017 and 2019.

In 2016, the College merged with Bexley College and Greenwich Community College, becoming London South East Colleges. This gave way to the rebranding of our Multi-Academy Trust as London South East Academies Trust.

In 2018, London & South East Education Group was formed – incorporating both our multi-campus college and our Multi-Academy Trust. We currently educate over 12,000 learners and employ over 1300 staff across our organisation.

As the Trust's sponsor, London South East Colleges provides strategic governance, professional guidance and significant infrastructure. This support enhances collaborative opportunities, bringing a wealth of additional expertise to the Trust and its wider network.

Both the College and the Trust, under the umbrella of the Group, operate as a social enterprise. We focus on generating social value within our communities, improving economic and social health. We work together to make a genuine difference to people's lives by providing learning opportunities for all, encouraging aspiration, ambition and success.



**LONDON
SOUTH EAST
ACADEMIES
TRUST**



Ofsted says...



The mental health and well-being of pupils are paramount. The school helps pupils to grow and flourish in their personal development. Pupils and students are kept safe."

Ofsted says...



Transition work prepares pupils and students well for the next stage of their education, employment or training. By the end of Key Stage 4, pupils achieve a good range of academic and vocational qualifications.”



Governance



Our schools were already thriving organisations but it was clear that there was much to be gained from joining a successful Trust.

“Our whole community has benefited from the financial security that being part of a bigger organisation offers – particularly in terms of shared services, which has enabled our staff to have a greater day to day focus on supporting their pupils.

“Our capability to deliver high quality CPD and staff training has also been maximised. We share ideas and best practice with colleagues across the Trust and can offer staff many more progression and development opportunities. The diverse provision offered by the various schools in our network means we can better support children who may need specialist interventions.”

Madelaine Caplin, formerly Executive Headteacher, Belmont and Woodside Academies and now Director of School Improvement for London South East Academies Trust.

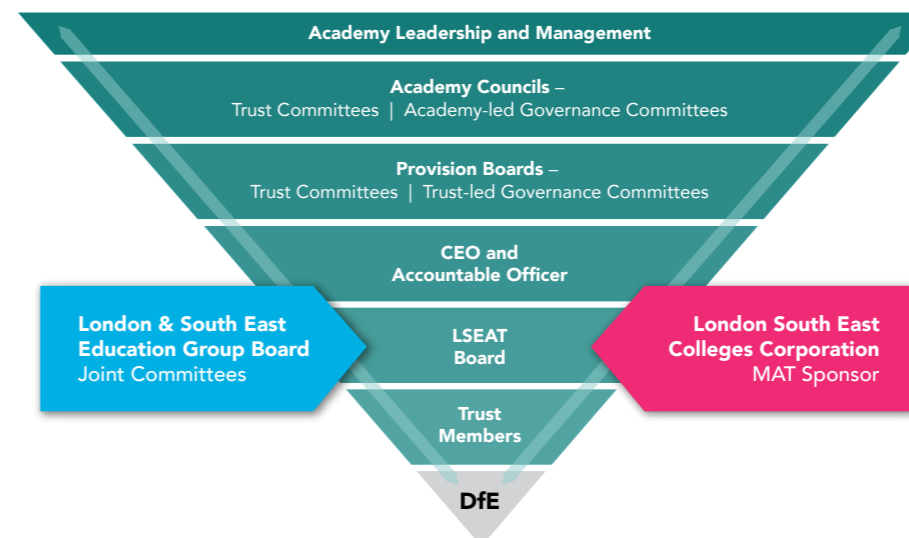
The unique structure of our Education Group enables us to provide a high-quality, specialist educational offer to children and young people from the age of five through to 25. This facilitates effective transition at all stages; offering a clear line of sight and progression to further and higher education, apprenticeships and fulfilling careers.

We provide specialist support throughout each child’s educational journey – including accessible pathways into our outstanding Further Education SEND provision where appropriate, working in partnership with families.

Our cross-Group close working relationships with Local Authorities, agencies and charities are enabling us to grow and develop our diverse offer across the region – for example, the addition of Bexley Music to our portfolio of services and extensive therapeutic programme.

Building on these excellent foundations, our ambition is to continue growing the Trust to strengthen our services and meet the significant (and increasing) need for high quality education for children and their families across London, Kent and Surrey.

London South East Academy Trust : Exempt Charity and Company Limited by Guarantee.



Principal Regulator: Secretary of State for Education

What can we offer schools?

We support all the schools in our Trust to retain their individual and unique identities; enabling them to meet the needs of and be a thriving part of their communities.

However, the positive impact of our schools is amplified by being part of a strong Trust and there are significant benefits of joining our like-minded, collaborative network.

Throughout our journey of growth, we have learnt that giving our schools freedom to grow and respond to their own local needs while operating within a wider, supportive framework is a highly effective approach – benefiting staff, pupils and communities.

Our schools generate a huge amount of specialist expertise, strong systems leadership, strategic management and exceptional professional development. Our cross-Trust approach provides internal promotion opportunities for staff, supporting retention and recruitment across our schools.

In addition, effective teaching and learning initiatives are shared between schools, together with investment in curriculum resources that supports excellent provision at all levels.

A wide range of shared services - including: HR, Finance, Estates Management, Health & Safety, IT, Marketing, Safeguarding and Governance Services – increases financial resilience and raises standards, giving long-term security and sustainability. Supporting our schools with these important 'back office' functions allows our leaders to focus on education.

The Trust's sponsor, London South East Colleges, provides significant infrastructure and brings additional professional expertise to our network of schools. This strengthens the quality of the provision we can offer; enhancing collaboration and sharing of best practice throughout our wider networks.

In line with government ambition regarding Multi-Academy Trust expansion, our schools work together to share best practice. They provide mutual support and offer unique progression opportunities to the young people who sit at very heart of our vision and ambition.

Several of the schools within our Trust were failing when they joined us. Our outstanding school improvement programme, implemented by committed leadership teams – together with strong financial support – has resulted in rapid improvement and growth.

Working with us

As a growing and innovative organisation, we would be delighted to talk with like-minded partners to explore the mutual benefits of joining our Trust. We welcome all types of schools and are keen to grow our mainstream offer alongside our excellent special and alternative provision.

We are focused on developing a mixed economy approach, in the knowledge that schools within multi academy trusts are there to support one another, with diversity being a real asset. We are confident that we can add real value to strengthen and enhance your existing provision, inside and outside the classroom.

A range of options and collaborative approaches are available to you, including sponsorship, voluntary conversion and a range of Multi-Academy and Single-Academy Trust transfer and merger options.

There are also opportunities for short-term partnerships and flexible service-level agreements. We are committed to establishing inclusive networks across the region; ensuring that children, young people and their families can access high-quality provision at all stages of their education.

Please do get in touch to find out more about our ambitions and how your school can become part of our exciting journey.



Our ambition, vision and values

We aim to continue strengthening our network of schools by:

- » Celebrating our diversity
- » Promoting excellence
- » Enabling personal development, achievement and progression
- » Safeguarding the well-being of all children, young people and staff



Our vision is to create a future where:
**every child,
 in every school,
 can flourish every day.**

This vision encompasses aspiration, educational excellence, collaboration, sharing of best practice and an ambition to add social value to the communities we serve.



Our vision

SUCCESS

Success is for all: we create a culture of continuous improvement, encouraging all pupils and staff to strive to be better, and succeed.

TEAMWORK

We work together to maximise the talent and abilities of all, with our pupils central to every choice we make.

ACHIEVEMENT

We have ambition for our pupils and staff so that they can achieve and exceed with courage, resilience and determination, realising their own unique potential.

RESPECT

We empower our pupils and our staff to be respectful, to value diversity and to maximise this as a talent and strength.

SERVICE

Our purpose is to serve our pupils and our communities. Leaders at every level serve with integrity, ensuring our pupils achieve and progress in society.

We aim to:

- » Give young people access to a network of inspirational schools, which meet the individual needs of every child, promote self-esteem and maximise their unique talents and abilities.
- » Ensure that every child entrusted to us is supported to reach their full potential – emotionally, socially and academically at every educational stage.
- » Have a constant focus on improving our holistic education offer, ensuring that every child can achieve and progress successfully to the next stage of their education and ultimately, into fulfilling employment and lives as young adults.
- » Reward ambition, celebrate success and encourage high aspiration in all of our schools, all of the time, for both staff and pupils.
- » Maximise the strength of diversity within our communities and use this to enhance the learning experience of every child and young person, ensuring they all have a sense of pride and belonging.
- » Work to improve the life chances of all children and young people, particularly in areas of social and economic deprivation.
- » Actively challenge social inequality by providing high quality education and wider support – ensuring we have a positive social impact on lives and communities.
- » Create a diverse network of high performing schools with strong leadership that unlocks children's potential at every level.
- » Proactively support education system leadership for ongoing self-improvement and to help improve school standards across our region.

BELMONT ACADEMY



Situated in the London Borough of Bexley, our school's excellent facilities provide pupils with the opportunity to take part in a wide range of activities, ensuring that they thrive socially, physically, emotionally and academically. Our pupils are highly motivated, well behaved and a pleasure to teach.

We are an inclusive mainstream primary school, judged as Good by Ofsted. We have resource provision accommodating children with visual impairment and/or with other physical or medical needs. Belmont also offers part time nursery provision for 26 children.

Our pupils progress into a range of secondary provision. This includes grammar schools within Bexley and Kent and mainstream secondary schools in Bexley, Greenwich and Bromley – with some pupils choosing schools within the private education sector.

Bexley Music is also based at our site, delivering high quality music education for young people across the region. This service provides access to a range of musical activities and opportunities including: instrumental tuition, choirs, bands, orchestras, performances and tours.

Parents say...



I am extremely impressed with the learning that is being provided for my son. I have noticed a big improvement in his reading and writing skills and this is partly due to the variety of work that is being set."



We should like to thank everyone at Belmont Academy for providing our daughter with such a good platform into secondary education."

ASPIRE ACADEMY BEXLEY



This small special school caters for primary-age children with social, emotional and/or behavioural needs. We promote inclusion in the widest sense, supporting pupils and their families to access the best possible education and prepare them for transition at every stage.

Many of our pupils have had negative experiences of mainstream school, so we work hard to ensure they are safe, happy and able to reach their full potential. Our specialist team does this by encouraging the children to form meaningful relationships and develop the emotional resilience needed to overcome barriers and challenges.

We work hard to make sure learning is both engaging and relevant. As well as a focus on core literacy and numeracy skills, we ensure that our pupils have the opportunity to experience a wide range of activities both inside and outside the classroom. This includes regular trips, sports clubs and our forest school through to science workshops and School Council meetings.

Our curriculum is creative, rich and offers challenge at all levels. It covers the full National Curriculum and, where appropriate, pupils access national tests (such as SATS and phonics screening) in line with mainstream school settings.

Wellbeing and achievement are at the centre of our approach. Staff encourage pupils to embrace opportunities and become productive members of our local community – with high aspirations and ambition for their futures.

Parents say...



Aspire is a forward-thinking school, creating a caring, ambitious and friendly atmosphere – my child has been encouraged to learn in a supportive and empowered way."

Pupils say...



This feels like a proper school – I'm happy at Aspire, I really look forward to my classes, support from my class-mates and afterschool activities."

Belmont Road, Erith, Kent DA8 1LE
Telephone: 01322 432057
Email: info@bwf.education



South Gipsy Road, Welling, Kent DA16 1JB
Telephone: 020 8304 1320
Email: admin@aspirebexley.org.uk



BROMLEY BEACON ACADEMY

This school offers special provision for children with social, emotional and mental health (SEMH) needs.

Split across two redeveloped campuses in Orpington (KS2–3) and Bromley (KS4–5), pupils are supported to learn in a safe and happy environment. For KS1 (Y2) children, we have a hub at Bromley Trust Academy offering specialist SEMH provision.

Bromley Campus

The school's unique atmosphere of mutual respect and resilience enables our young people to gain the confidence and skills they need to grow into purposeful young adults and reach their full potential.

Our specialist team of therapists and career advisors work closely with each pupil to address individual needs, ensuring a holistic and bespoke approach – both during their time with us and beyond.

In addition to a full academic curriculum, we offer pupils the opportunity to specialise in a range of vocational subjects including Construction, Motor Bike Engineering, Food Technology/Barista and Music Technology. Our close working relationship with London South East Colleges ensures that progression is well supported, enabling pupils to move into further education and apprenticeships.

This innovative approach has resulted in achievement rates improving for last three consecutive years with 100% of pupils progressing into further education, apprenticeships or employment.

Old Homesdale Road, Bromley, Kent BR2 9LJ
Telephone: 020 3319 0503
Email: office@bromleybeaconacademy.org.uk



Parents say...



What you have done for the summer camp is more than amazing. My child has had so much fun. He's come home smiling and eager to tell me the daily antics. He's grown so much independence over the last week and it's all down to your school and staff! I cannot praise you enough!"



Orpington Campus

At this recently re-developed site, our 7–13-year-old pupils are supported to develop core literacy and numeracy skills, alongside a broad curriculum to inspire, motivate and interest them.

We prioritise emotional and mental health within every aspect of school life – policies, environment, curriculum, special events and campaigns – to positively impact outcomes for pupils. Our extensive therapeutic services are available to all, with individual support and intervention where needed.

Our specialist staff have high expectations of every pupil, while taking a nurturing and encouraging approach to help them reach their potential. We focus on building strong and effective partnerships with parents, carers and other agencies – with the belief that education of our young people is a shared responsibility.

The majority of pupils progress into Key Stage 4 and 5 provision on our Bromley site, via a seamless transition. Once here, their individual needs continue to be well supported, enabling them to reach their full potential.

Avalon Road, Orpington BR6 9BD
Telephone: 01689 821 205
Email: office@bromleybeaconacademy.org.uk



ENDEAVOUR ACADEMY BEXLEY



Situated in the London Borough of Bexley, Endeavour Academy offers mixed specialist provision for 11–16-year-olds with a range of learning needs.

With a strong focus on pastoral care, we aim to instil in every pupil both the desire to learn and the belief that they can achieve their goals. We believe that no one should be disadvantaged through lack of opportunity.

Our full curriculum of GCSE and BTEC qualifications mirrors those on offer within mainstream education – ensuring that our pupils have the same opportunities as their peers. Our outstanding Spiritual, Moral, Social and Cultural (SMSC) provision was recently recognised with a Gold Award by the national SMSC awarding body; demonstrating the genuine commitment to raising our pupils' aspirations.

We also recognise the importance of high-quality career guidance to help our young people make informed and appropriate decisions about their next steps after school. Our transition team provides dedicated advice and support as an integral part of every pupil's education.

Our pupils move into further education, apprenticeships or employment, with 100% of our most recent Year 11 cohort progressing successfully. This year 100% of Year 11 students gained L1+ in Literacy and Numeracy qualifications, with 90% achieving five GCSEs (1–9).

Parents say...



All I want to say is that I am one happy Mum because of how far my son has come from Year 7 with him being difficult, to Year 11 sitting his GCSEs. And I want to say a big thank you for having the therapy dogs in school as they worked wonderfully for my son. We will miss you all."



Thanks so much for sending my son his GCSE results. We're all really pleased with them. Well done to him and the awesome staff who have supported him at Endeavour."

BRAMLEY OAK ACADEMY



The newest school to join the Trust family, Bramley Oak Academy offers special provision for 5–11-year-old boys with Social, Emotional and Mental Health needs.

Since taking on this school, situated in Guildford Surrey, rapid improvement has occurred in all areas, with the highest expectations and aspirations being set for all our pupils.

We believe that every young person should have an equal opportunity to achieve their full potential and we focus on ensuring they make good progress as a result of outstanding teaching and pastoral care.

Our diverse curriculum includes a core offer in literacy and numeracy, which helps pupils to access other areas. This encourages curiosity, engagement, enjoyment and participation. We aim to provide a fully immersive learning experience with activities, speakers and trips. Technology is also a key feature of everyday learning at Bramley Oak.

In addition, we put a strong focus on developing social, moral, spiritual and cultural awareness – via our school values, British values, PSHE and our school council – to help our young people prepare for their next phase of life, ahead into adulthood and ultimately into the world of work.



Woodside Road, Bexleyheath, Kent DA7 6LB
Telephonel: 01322 553 787
Email: admin@endeavourbexley.org.uk



Horsham Road, Bramley, Guildford, Surrey GU5 0BJ
Telephone: 01483 663 083
Email: info@bramleyoakacademy.org.uk



BROMLEY TRUST ACADEMY



Bromley Trust Academy was the first of all the schools to join our Trust. Split across three campuses, the school offers mixed alternative provision for children from the age of 5 to 16.

We are proud of our pupils and believe in their potential. We take pride in our achievements, celebrate success and work hard to prepare pupils for life beyond our doors – with career and progression support being a priority.

Blenheim Campus

We provide education and support for students in Years 7–11 who are part of CAMHS. Each has social, emotional and mental health needs, meaning they are unable to access mainstream education.

In our supportive, calm and engaging environment, staff build positive relationships with students and help them obtain a range of academic and vocational qualifications.

This provision aims to provide students with an outstanding education that helps them succeed in life and achieve their potential. Students acquire the values, skills, knowledge and understanding to prepare them well for life beyond school.

Our ethos is based on full inclusion, high expectations, outstanding teaching and learning with a clear focus on the needs and potential of every student. Working with parents, our highly committed and skilled staff work to ensure that students are all equally-valued and have their achievements celebrated.

Students say...



I am proud of my learning achievements and my mental health because when I first came here I didn't think I would have any qualifications when I left but I am now confident within myself and my abilities to communicate within the school community and outside."



I feel I have made amazing progress, academically and socially. I have achieved things, I thought was impossible, and I'm really proud of that. The staff and other students have been amazing and have really helped me adjust to unfamiliar surroundings, which helped a lot."

Hayes Campus

We provide high quality education and support for 11–16-year-olds who are at risk of being (or who have been) permanently excluded from their mainstream school.

We work with these young people to identify and remove barriers to learning, so that where possible they can return to a mainstream school or access a specialist school setting if more appropriate.

Our staff are dedicated, caring professionals who provide unconditional support and positively challenge pupils to be the best they can be. We have high standards and expectations of pupils, working closely with them and their parents/carers.

We help our pupils to enjoy learning, build positive and supportive relationships, obtain academic and/or vocational qualifications, build resilience and exercise personal responsibility. We also work to ensure our young people have a sense of community in an atmosphere of mutual respect and tolerance.

Our examination results over the last five years have demonstrated positive progression and last summer 96% of our students achieved at least five 1–9 GCSEs. This is significantly higher than the national average for alternative provisions.

With the support of our outreach service, we work closely with schools to ensure students who are appropriate for mainstream education are able to return promptly.

Parents say...

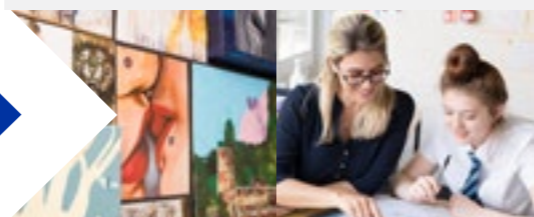


Although my daughter has only been at the school a short while, the work they have done with her is remarkable and has really changed her view of education."



I just want to say how grateful myself and my husband are for all the time and effort that all of the teachers and staff have put into my son. He became a much happier and calmer child when he was with you. A personal thank you to staff who saw our son as a blank canvas rather than being put off by the paperwork. You were also completely non-judgmental, which we appreciate."

Blenheim Road, Orpington BR6 9BH
Telephone: 01689 829 648
Email: admin@bromleytrustacademy.org.uk



Hayes Lane, Bromley BR2 9EA
Telephone: 020 8290 0274
Email: admin@bromleytrustacademy.org.uk





Midfield Campus

Our Midfield Campus provides education and support for pupils aged 5–11, who are at risk of being, or have been, permanently excluded from primary school. We aim to work with these young people to identify and remove barriers to learning, so that where possible they can return to a mainstream school or access a specialist school setting if more appropriate.

Our expert team creates a stimulating, challenging and inspiring learning environment, enabling pupils to develop their independence and decision-making skills. Working in partnership with parents/carers and the pupils themselves, we prepare young people to be successful in the next steps of their educational journeys.

Staff are dedicated, caring professionals who provide unconditional support, challenging pupils to flourish and be the best they can be. Staff use their experience, passion, and commitment to ensure that children feel safe, have high self-esteem and have every opportunity to learn socially and academically.

We prepare our pupils for fulfilling lives in society, where they have the opportunity to go to university, to secure employment, to be leaders in their communities and to live a happy family life.

Parents say...



You have a very lovely school with some beautiful staff members and I can't thank you guys enough. You helped us when nobody else could and for that we will never forget BTA. Thank you."



I cannot begin to tell you how grateful I am for the time my son has spent with you. He came a broken little boy at the end of his sanity (and I did too!) and you spent time with him and you gave him your patience and understanding. You showed him kindness and acceptance when he needed it most. You all together gave me my son back! He's clever, happy and learning again."

Alternative Curriculum College

This provision opened in September 2019, developed in partnership with London South East Colleges, London Borough of Bromley and the secondary schools within the Borough.

We support pupils who are facing challenges in their mainstream school setting by giving them the opportunity to study an alternative curriculum at our college campus in Bromley. Pupils attend the College two days a week, while remaining on single registration at their mainstream school.

Pupils can choose from several vocational areas including: Hair and Beauty, Multi-Skills (Brickwork, Carpentry, Plumbing and Electrics) and Motor Vehicle. This provides the opportunity for pupils to gain a minimum of a Level 1 qualification in their chosen vocation, with a view to giving them clear line of sight to their next steps and to their future career.

The theory and practical-based lessons relate wholly to the world of work, ensuring our pupils can see the relevance of their learning.

Achievement of pupils in this setting is high, with 100% of our most recent Year 11 cohort achieving at least a Level 1 vocational qualification in Hair & Beauty, Multi-skills, Motor Vehicle and Sport - alongside academic study at their mainstream setting.

Supported by our dedicated team of staff, every Year 11 pupil secured a post-16 destination last year including apprenticeships, semi-professional or professional football academy scholarships or places on a Level 2 course in their chosen vocation at one of our London South East Colleges' campuses.

Midfield Way, Orpington, Kent BR5 2QL
Telephone: 020 8308 9620
Email: admin@bromleytrustacademy.org.uk



London South East Colleges, Bromley – Rookery Lane, Bromley BR2 8HE
Telephone: 020 3954 4000
Email: admin@bromleytrustacademy.org.uk



HORIZONS ACADEMY BEXLEY

Horizons provides high quality support to pupils in Key Stages 1–4 who have been permanently excluded (or are at risk of exclusion) from mainstream school. The school also has a satellite provision located at Endeavour Academy, supporting children with a range of medical needs.

We focus on early intervention, offering a range of services from short term respite to longer term education for students in KS4. Our expert team works intensively with post-16 pupils to secure destinations whilst providing ongoing support. This helps ensure that all pupils can maintain their educational placements, training programmes and/or employment.

Our aim in Key Stages 1–3 is to re-integrate pupils back into a mainstream or specialist school via our 'Refocus programme'. We work closely with external agencies and our partner schools to identify the needs of the child and develop the child's own ability to learn, so that they feel confident about being in the classroom.

We have created an environment and developed a curriculum which supports our pupils to become well-rounded citizens, who are able to productively contribute to the community. We want all our young people to feel confident about their future and in their own ability to live a successful, meaningful life.



Parents say...



Thank you for taking our son under your wing and helping him to fly."

WOODSIDE ACADEMY

This special, over-subscribed academy offers provision for 4–19-year-olds with Autism (ASD) and moderate learning needs.

Our calm, caring, welcoming and purposeful environment ensures that every child is well supported, with learning and therapy tailored to individual needs. We value trust, honesty and kindness and focus on helping our pupils to become happy and confident.

We prepare our pupils for all stages of development by raising their achievement and helping them to develop strong communication skills. This ensures they can be heard, are informed and can make meaningful choices – which are all key to future success.

We also focus on the development of independence, social communication and interaction with our rich, child-centred curriculum. This is tailored to individual need, ability and wellbeing – encompassing ambitious academic and holistic aspirations as our young people journey towards adulthood.

At the end of Year 11, pupils achieve qualifications in English, Maths, Science and a vocational subject. They may choose either to progress onto local colleges or to remain at Woodside for their sixth form education. Our young people typically access a range of further education courses according to their interests and ability, with staff and external advisors providing support and guidance regarding the progression options on offer to them.

Parents say...



We feel we made the right decision leaving mainstream to come to Woodside as our son now actually enjoys school and is able to arrive on time every day. It's like a breath of fresh air and is a special place for him where he feels safe and can actually detach from family."



My child is a looked after child. I find the school really care for him and have always been there for him. They know him very well."

Lensbury Way, Abbey Wood, London SE2 9TA
Telephone: 020 8312 2746
Email: admin@horizonsbexley.org.uk



Colyers Lane, Erith, Kent DA8 3PB
Telephone: 01322 350 123
Email: office@bwf.education



Additional services



BEXLEY USIC

Bexley Music (formerly known as Bird College Music Services) became part of our Trust in 2021, delivering music services across Bexley and beyond. It provides high quality music education for children and young people, giving them access to a range of musical activities and opportunities including: instrumental tuition, choirs, bands, orchestras, performances and tours.

Based at Belmont Academy, Bexley Music is the official music provider for the Borough. As a Trust, we value music across all our settings and recognise the importance of music to whole communities.

For more information visit:
www.bexley-music.co.uk



London South East Children's University is part of a growing network of Children's Universities across the UK. Aimed at children aged 5–14, the award programme aims to develop a love of learning in children by encouraging and celebrating participation in extra-curricular activities in and outside of school. The impact of these activities is proven to be positive, which is why we are committed to creating a level playing field of opportunity and opening up access to children of all backgrounds.

For more information visit:
www.lsec.ac.uk/childrens-university



Careers Guidance

Our specialist careers advisors help young people to understand their progression options, make appropriate choices and secure positive pathways.

It is our aim to enhance children and young people's prospects and encourage them to contribute to their communities. We are ambitious for all our pupils, with the structure of our education group supporting seamless transition into further education, apprenticeships or other chosen pathways.

We support pupils to secure and attend work placements with a range of employers, ensuring they get real world experience of working environments and develop crucial employability skills and knowledge.

The support our schools offer doesn't stop once the pupils move on at the end of Year 11. We provide an ongoing post-statutory support service, which allows students to have continual access to career information advice and guidance until the age of 18. This includes 1:1 support, group support and mentoring to ensure they sustain placements and/or remain in education, training or employment.

We also comply fully with the Baker Clause, ensuring pupils have access to information about all the post-16 educational pathways available so they can make informed choices about their next steps.

Outreach Services

Our outreach teams support primary and secondary-aged children, their schools and their families. We focus on preventing avoidable exclusions and support children in mainstream settings to access specialist provision where needed.

Our experienced and varied teams include SENCOs, sports coaches, mentors, educational psychologists, parent practitioners and intervention specialists. They offer bespoke individual care to pupils and their families, including respite and re-integration support, as well as delivering wider training, workshops and awareness programmes.

Working with head teachers on a 'whole school' approach, our teams also provide high-quality CPD to help staff in mainstream schools to develop the skills needed to better manage behaviours and support the varied needs of their students.

Our multi-agency approach ensures that families, schools and the Trust all work closely to support every child, through Local Authority referrals and direct requests from schools.

Case Study

Bramley Oak – Surrey County Council

Bramley Oak Academy (formerly Wey House School) is a Special School in Surrey with capacity for 61 boys aged 5–11.

Following advisory support in January 2020, Bramley Oak Academy joined London South East Academies Trust in October 2020 as part of an Academy conversion.

The school had been graded as 'Inadequate' by Ofsted in all areas of its November 2018 inspection. However, since joining London South East Academies Trust, the school has been under an intense and successful programme of school improvement, with support from systems leaders across the organisation.

There has also been substantial progress in teaching and learning at the school, with the introduction of new schemes of work. For example; phonics is being taught in a systematic and assessable way, daily writing tasks are incorporated within lessons and learning has become the key focus across school culture.

The immediate success has been highlighted by positive responses to parent, pupils and stakeholder surveys, with particular improvements being seen in relation to wellbeing, leadership and improved learning and behaviour. Additionally, the school now has a full roll of 61 children for the first time and a proposed expansion to the provision has been wholly endorsed by the Local Authority.

BRAMLEY OAK ACADEMY



Watching the transformation of Bramley Oak Academy has been fantastic. The need for high quality specialist provision across the county is growing and it is fortunate that we have been able to draw on the expertise of London South East Academies Trust to help meet this demand."

Jane Winterbone, Deputy Director of Education at Surrey County Council.



We are proud of every school within our Trust; including our dedicated staff and the achievements of all our pupils.

As we work to expand our high-quality provision, connecting with like-minded partners is a key priority for us and we would be delighted to explore the opportunities available.

If you would like to speak to one of our team, visit one of our sites or require any further information about London South East Academies Trust please contact:

London South East Academies Trust

Rookery Lane,
Bromley
BR2 8HE

Telephone:
020 3954 4000

Email:
groupprincipal@lsec.ac.uk



**LONDON
SOUTH EAST
ACADEMIES
TRUST**

London South East Academies Trust

Rookery Lane,
Bromley
BR2 8HE

Telephone: 020 3954 4000

www.LSEAT.co.uk