

LONDON
SOUTH EAST
ACADEMIES
TRUST



Welcome to
London South East Academies Trust



We are
delighted
to welcome
you to
London
South East
Academies
Trust





Our family of primary and secondary schools offer high-quality mainstream, special and alternative provision – supporting children and young people across London, Kent and Surrey.

Each of our schools is unique and an important part of its local community. However, each one also benefits from being part of our wider Trust network, which enables the sharing of expertise, knowledge and support.

We are passionate about realising potential and ensuring that **every child, in every school, can flourish every day.**

Dedicated staff in all our schools work tirelessly to support pupils through their educational journey and beyond; helping to unlock unique talents and equipping them with the confidence to succeed now and in the future.

We work closely with parents and carers, as well as local authorities and other agencies, to provide pupils with the support they need and access to every opportunity available. We know that a joined-up approach is the very best way to secure successful outcomes for all our children and young people.

The unique set-up of our wider education group – including a multi-campus further and higher education college – also provides excellent progression opportunities. Our specialist careers advisors support pupils at every stage, inspiring them to plan their future and achieve their ambitions.

We very much value our community of parents, carers and stakeholders. We constantly strive to offer the highest quality provision and appreciate all feedback – so please do get in touch with any queries, thoughts or ideas you may have.

Thank you for your support.

With kindest regards,

Dr Sam Parrett CBE
CEO of London South East Academies Trust



Our history



The set-up of our Trust (originally named Bromley Educational Trust) was led by Bromley College of Further and Higher Education in 2014. We took on our first two schools in 2015.

In 2016, the College merged with Bexley College and Greenwich Community College, becoming **London South East Colleges**. This gave way to the rebranding of our Multi-Academy Trust as **London South East Academies Trust**.

In 2018, **London & South East Education Group** was formed – incorporating both our multi-campus college and our schools. We currently educate over 12,000 learners and employ over 1300 staff across our organisation.

We operate as a social enterprise. We work together to make a genuine difference to people's lives by providing learning opportunities for all, encouraging aspiration, ambition and success.

Our Trust is a **community-based organisation**, which prides itself on establishing strong connections with Local Authorities and other stakeholders.

Whilst the Trust Board has overall responsibility for top-level decision-making, our Governance structure includes **Local Academy Councils** which focus on day-to-day life in our schools. These have been set up to ensure that schools and their staff are supported and challenged, providing the highest standard of education to all pupils.

Parent/Carer Governors are part of our Academy Councils. This ensures a vital parental perspective, representing the voice of our pupils, their families and the local community.





Ofsted says...



The mental health and well-being of pupils are paramount. The school helps pupils to grow and flourish in their personal development."

Ofsted says...



Transition work prepares pupils and students well for the next stage of their education, employment or training. By the end of Key Stage 4, pupils achieve a good range of academic and vocational qualifications."



Our group



The unique structure of London & South East Education Group enables us to provide high-quality, education to children and young people from the ages of five to 25.

We provide specialist support throughout a child's educational journey – including accessible pathways into our outstanding Further Education SEND provision where appropriate, working in partnership with families.

Our cross-Group close working relationships with Local Authorities, agencies and charities are enabling us to grow and develop our diverse offer across the region – for example, the addition of the Bexley Music service to our portfolio of services and extensive therapeutic programme.

Building on these excellent foundations, our ambition is to continue growing the Trust to strengthen our services and meet the significant (and increasing) need for high quality education for children and their families across the region.





Our ambition, vision and values



We aim to continue strengthening our network of schools by:

- » Celebrating our diversity
- » Promoting excellence
- » Enabling personal development, achievement and progression
- » Safeguarding the well-being of all children, young people and staff



Our vision is to create a future where:

**every child,
in every school,
can flourish every day.**

This vision encompasses aspiration, educational excellence, collaboration, sharing of best practice and an ambition to add social value to the communities we serve.



We aim to:

- » Give young people access to a network of inspirational schools, which meet the individual needs of every child, promote self-esteem and maximise their unique talents and abilities.
- » Ensure that every child entrusted to us is supported to reach their full potential – emotionally, socially and academically at every educational stage.
- » Have a constant focus on improving our holistic education offer, ensuring that every child can achieve and progress successfully to the next stage of their education and ultimately, into fulfilling employment and lives as young adults.
- » Reward ambition, celebrate success and encourage high aspiration in all of our schools, all of the time, for both staff and pupils.
- » Maximise the strength of diversity within our communities and use this to enhance the learning experience of every child and young person, ensuring they all have a sense of pride and belonging.
- » Work to improve the life chances of all children and young people, particularly in areas of social and economic deprivation.
- » Actively challenge social inequality by providing high quality education and wider support – ensuring we have a positive social impact on lives and communities.
- » Create a diverse network of high performing schools with strong leadership that unlocks children's potential at every level.
- » Proactively support education system leadership for ongoing self-improvement and to help improve school standards across our region.

Our values

SUCCESS

Success is for all: we create a culture of continuous improvement, encouraging all pupils and staff to strive to be better, and succeed.

TEAMWORK

We work together to maximise the talent and abilities of all, with our pupils central to every choice we make.

ACHIEVEMENT

We have ambition for our pupils and staff so that they can achieve and exceed with courage, resilience and determination, realising their own unique potential.

RESPECT

We empower our pupils and our staff to be respectful, to value diversity and to maximise this as a talent and strength.

SERVICE

Our purpose is to serve our pupils and our communities. Leaders at every level serve with integrity, ensuring our pupils achieve and progress in society.





Situated in the London Borough of Bexley, our school's excellent facilities provide pupils with the opportunity to take part in a wide range of activities, ensuring that they thrive socially, physically, emotionally and academically. Our pupils are highly motivated, well behaved and a pleasure to teach.

We are an inclusive mainstream primary school, judged as Good by Ofsted. We have resource provision accommodating children with visual impairment and/or with other physical or medical needs. Belmont also offers part time nursery provision for 26 children.

Our pupils progress into a range of secondary provision. This includes grammar schools within Bexley and Kent and mainstream secondary schools in Bexley, Greenwich and Bromley – with some pupils choosing schools within the private education sector.

Bexley Music is also based at our site, delivering high quality music education for young people across the region. This service provides access to a range of musical activities and opportunities including: instrumental tuition, choirs, bands, orchestras, performances and tours.





Parents say...



I am extremely impressed with the learning that is being provided for my son. I have noticed a big improvement in his reading and writing skills and this is partly due to the variety of work that is being set."



We should like to thank everyone at Belmont Academy for providing our daughter with such a good platform into secondary education."



Belmont Road, Erith, Kent, DA8 1LE
Telephone: 01322 432057
Email: office@belmont.lseat.org.uk





WARREN ROAD PRIMARY SCHOOL



Warren Road Primary School is located in Orpington, in the London Borough of Bromley. Rated by Ofsted as outstanding in all areas, our large primary school has a thriving community, supported by fantastic pupils, parents, staff and governors.

We are proud of our nurturing environment and high-quality teaching. We give highest priority to academic excellence through a curriculum that ensures all children can excel in all areas.

Our pupils take part in a wide range of activities to support their learning and development. This enables them to reach their full potential and progress successfully into secondary education, with our KS2 attainment results in the top 10% nationally.

Our school holds a range of accreditations, including Primary Science and Eco Ambassador, in recognition of our commitment to providing the highest standard of education.

We also support other local schools through the Warren Road Teaching Academy. Offering a wide range of CPD, our courses include subject leader forums that help colleagues keep up to date with the latest developments and provide opportunities to share best practice.





Warren Road, Orpington, BR6 6JF
Telephone: 01689 853798
Email: office@warrenroadprimary.co.uk



This school offers special provision for children with social, emotional and mental health (SEMH) needs.

Split across two re-developed campuses in Orpington (KS2–3) and Bromley (KS 4–5), pupils are supported to learn in a safe and happy environment.

For KS1 (Y2) children, we have a hub at Bromley Trust Academy offering specialist SEMH provision.

Bromley Campus

The school's unique atmosphere of mutual respect and resilience enables our young people to gain the confidence and skills they need to grow into purposeful young adults and reach their full potential.

Our specialist team of therapists and career advisors work closely with each pupil to address individual needs, ensuring a holistic and bespoke approach – both during their time with us and beyond.

In addition to a full academic curriculum, we offer pupils the opportunity to specialise in a range of vocational subjects including Construction, Motor Bike Engineering, Food Technology/Barista and Music Technology. Our close working relationship with London South East Colleges ensures that progression is well supported, enabling pupils to move into further education and apprenticeships.

This innovative approach has resulted in achievement rates improving for last three consecutive years with 100% of pupils progressing into further education, apprenticeships or employment in 2020/21.





Ofsted says...



Staff morale is exceptionally high. The school works collaboratively with the schools across the trust, and with mainstream schools and the local authority."



Old Homesdale Road, Bromley, Kent, BR2 9LJ
Telephone: 020 3319 0503
Email: office@bromleybeacon.lseat.org.uk





Orpington Campus

At this recently re-developed site, our 5–13-year-old pupils are supported to develop core literacy and numeracy skills, alongside a broad curriculum to inspire, motivate and interest them.

We prioritise emotional and mental health within every aspect of school life – policies & environment, curriculum, special events & campaigns – to positively impact outcomes for pupils. Our extensive therapeutic services are available to all, with individual support and intervention where needed.

Our specialist staff have high expectations of every pupil, while taking a nurturing and encouraging approach to help them reach their potential. We focus on building strong and effective partnerships with parents, carers and other agencies – with the belief that education of our young people is a shared responsibility.

The majority of pupils progress into Key Stage 3 and 4 provision on our Bromley site, via a seamless transition. Once here, their individual needs continue to be well supported, enabling them to reach their full potential.





Parents say...



What you have done for the summer camp is more than amazing. My child has had so much fun. He's come home smiling laughing eager to tell me the daily antics. He's grown so much independence over the last week and it's all down to your school and staff! I cannot praise BBA enough!"



Avalon Road, Orpington, BR6 9BD
Telephone: 01689 821 205
Email: office@bromleybeacon.lseat.org.uk





Situated in the London Borough of Bexley, Endeavour Academy offers mixed specialist provision for 11–16-year-olds with a range of learning needs.

With a strong focus on pastoral care, we aim to instil in every pupil both the desire to learn and the belief that they can achieve their goals. We believe that no one should be disadvantaged through lack of opportunity.

Our full curriculum of GCSE and BTEC qualifications mirrors those on offer within mainstream education – ensuring that our pupils have the same opportunities as their peers. Our outstanding Spiritual, Moral, Social and Cultural (SMSC) provision was recently recognised with a Gold Award by the national SMSC awarding body; demonstrating the genuine commitment to raising our pupils' aspirations.

We also recognise the importance of high-quality career guidance to help our young people make informed and appropriate decisions about their next steps after school. Our transition team provides dedicated advice and support as an integral part of every pupil's education.

Our pupils move into further education, apprenticeships or employment with 100% of our most recent Year 11 cohort progressing successfully.





Parents say...

“ All I want to say is that I am one happy Mum because of how far my son has come from Year 7 with him being difficult, to Year 11 sitting his GCSEs. And I want to say a big thank you for having the therapy dogs in school as they worked wonderfully for my son. We will miss you all.”

“ Thanks so much for sending my son his GCSE results. We're all really pleased with them. Well done to him and the awesome staff who have supported him at Endeavour.”

Woodside Road, Bexleyheath, Kent, DA7 6LB
Telephone: 01322 553 787
Email: office@endeavour.lseat.org.uk





This small special school caters for primary-age children with social, emotional and/or behavioural needs. We promote inclusion in the widest sense, supporting pupils and their families to access the best possible education and prepare them for transition at every stage.

Many of our pupils have had negative experiences of mainstream school, so we work hard to ensure they are safe, happy and able to reach their full potential. Our specialist team does this by encouraging the children to form meaningful relationships and develop the emotional resilience needed to overcome barriers and challenges.

We work hard to make sure learning is both engaging and relevant. As well as a focus on core literacy and numeracy skills, we ensure that our pupils have the opportunity to experience a wide range of activities both inside and outside the classroom. This includes regular trips, sports clubs and forest school through to science workshops, Children's University and School Council meetings.

Our curriculum is creative, rich and offers challenge at all levels. It covers the full National Curriculum and, where appropriate, pupils access national tests (such as SATS and phonics screening) in line with mainstream school settings.

Wellbeing and achievement are at the centre of our approach. Staff encourage pupils to embrace opportunities and become productive members of our local community – with high aspirations and ambition for their futures.





Parents say...



Aspire is a forward-thinking school, creating a caring, ambitious and friendly atmosphere - my child has been encouraged to learn in a supportive and empowered way."

Pupils say...



This feels like a proper school - I'm happy at Aspire, I really look forward to my classes, support from my class-mates and afterschool activities."



South Gypsy Road, Welling, Kent, DA16 1JB
Telephone: 020 8304 1320
Email: admin@aspirebexley.org.uk





This special, over-subscribed academy offers provision for 4–19-year-olds with Autism (ASD) and moderate learning needs.

Our calm, caring, welcoming and purposeful environment ensures that every child is well supported, with learning and therapy tailored to individual needs. We value trust, honesty and kindness and focus on helping our pupils to become happy and confident.

We prepare our pupils for all stages of development by raising their achievement and helping them to develop strong communication skills. This ensures they can be heard, are informed and can make meaningful choices – which are all key to future success.

We also focus on the development of independence and social communication and interaction with our rich, child-centred curriculum. This is tailored to individual need, ability and wellbeing – encompassing ambitious academic and holistic aspirations as our young people journey towards adulthood.

At the end of Year 11, pupils achieve qualifications in English, Maths, Science and a vocational subject. They may choose either to progress onto local colleges or to remain at Woodside for their sixth form education. Our young people typically access a range of further education courses according to their interests and ability, with staff and external advisors providing support and guidance regarding the progression options on offer to them.





Parents say...

“ We feel we made the right decision leaving mainstream to come to Woodside as our son now actually enjoys school and is able to arrive on time every day. It’s like a breath of fresh air and is a special place for him where he feels safe and can actually detach from family.”

“ My child is a looked after child. I find the school really care for him and have always been there for him. They know him very well.”

Colyers Lane, Erith, Kent, DA8 3PB
Telephone: 01322 350 123
Email: office@woodside.lseat.org.uk





Bramley Oak Academy, situated in Guildford, Surrey, offers special provision for 5–11-year-old boys with Social, Emotional and Mental Health needs.

Since our Trust took on this school in 2022, rapid improvement has occurred in all areas with the highest expectations and aspirations being set for all our pupils.

We believe that every young person should have an equal opportunity to achieve their full potential and we focus on ensuring they make good progress as a result of outstanding teaching and pastoral care.

Our diverse curriculum includes a core offer in literacy and numeracy, which helps pupils to access other areas encouraging curiosity, engagement, enjoyment and participation. We aim to provide a fully immersive learning experience with activities, speakers and trips. Technology is also a key feature of everyday learning at Bramley Oak.

In addition, we put a strong focus on developing social, moral, spiritual and cultural awareness – via our school values, British values, PSHE and our school council – to help our young people prepare for their next phase of life, ahead into adulthood and ultimately into the world of work.





Horsham Road, Bramley, Guildford, Surrey GU5 0BJ
Telephone: 01483 663 083
Email: office@bramleyoak.lseat.org.uk





As the latest school to join our network, Heron Academy is located in Lambeth and supports around 80 11-18 year olds with a range of special needs including ASD, and severe and profound multiple learning difficulties.

Formerly known as The Michael Tippett School, Heron Academy is on a journey of rapid improvement, ensuring that every child and young person is supported to achieve their full potential.

A new Head Teacher and Senior Leadership Team have been put in place, together with the introduction of a new uniform and a range of improvements made to the building and learning environment.

Each pupil has a personalised curriculum to meet their unique needs and to help them meet their individual targets. Our specialist staff are committed to supporting this and work in partnership with parents and carers to achieve the very best outcomes for every child and young person.

With specialist facilities including a hydrotherapy pool, sensory room and a life skills area, pupils can access a wide curriculum and enrichment programme to meet their physical, academic and emotional needs. This is an evolving and creative offer, supporting personal development and focused on meeting individual EHCP outcomes.

Heron Academy has a calm and nurturing environment. We are extremely proud of the care and support we offer to our children, as we prepare them for the next steps in their lives.





Heron Road, Lambeth, SE24 0HZ
Telephone: 020 7326 5898
Email: contact@heron.lseat.org.uk





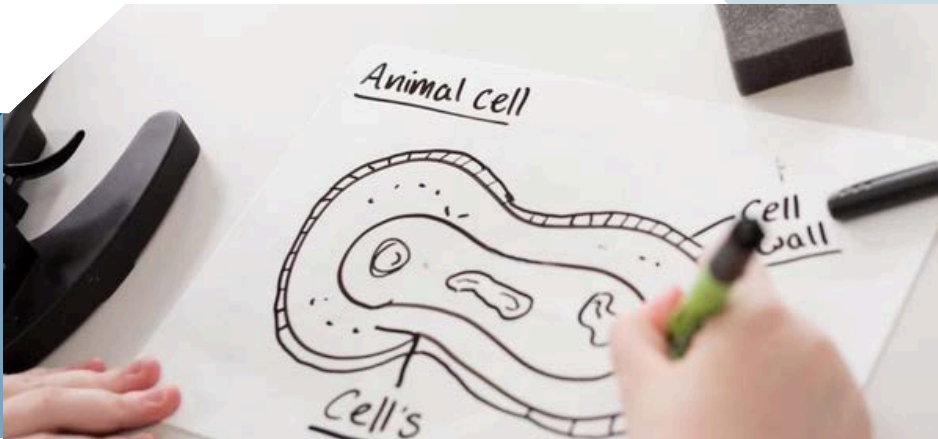
Bromley Trust Academy was the first of all the schools to join our Trust. Split across three campuses, the school offers mixed alternative provision for children from the age of 5 to 16. We are proud of our pupils and believe in their potential. We take pride in our achievements, celebrate success and work hard to prepare pupils for life beyond our doors – with career and progression support being a priority.

Blenheim Campus

We provide education and support for students in Years 7–11 who are part of CAMHS. Each has social, emotional and mental health needs, meaning they are unable to access mainstream education.

In our supportive, calm and engaging environment, staff build positive relationships with students and help them obtain a range of academic and vocational qualifications.

This provision aims to provide students with an outstanding education that helps them succeed in life and achieve their potential. Students acquire the values, skills, knowledge and understanding to prepare them for well for life beyond school.





Our ethos is based on full inclusion, high expectations, outstanding teaching and learning with a clear focus on the needs and potential of every student. Working in partnership with parents, our highly committed and skilled staff work ensure that students are all equally-valued and have their achievements celebrated.

Students say...



I am proud of my learning achievements and my mental health because when I first came here I didn't think I would have any qualifications when I left but I am now confident within myself and my abilities to communicate within the school community and outside."



I feel I have made amazing progress, academically and socially. I have achieved things, I thought was impossible, and I'm really proud of that. The staff and other students have been amazing and have really helped me adjust to unfamiliar surroundings, which helped a lot."

Blenheim Road, Orpington, BR6 9BH
Telephone: 01689 829 648
Email: office@bromleytrust.lseat.org.uk





Hayes Campus

We provide high quality education and support for 11–16-year-olds who are at risk of being (or who have been) permanently excluded from their mainstream school.

We work with these young people to identify and remove barriers to learning, so that where possible they can return to a mainstream school or access a specialist school setting if more appropriate.

Our staff are dedicated, caring professionals who provide unconditional support and positively challenge pupils to be the best they can be. We have high standards and expectations of pupils, working closely with them and their parents/carers.

We help our pupils to enjoy learning, build positive and supportive relationships, obtain academic and/or vocational qualifications, build resilience and exercise personal responsibility. We also work to ensure our young people have a sense of community in an atmosphere of mutual respect and tolerance.

Our examination results over the last five years have demonstrated positive progression and last summer 96% of our students achieved at least five 1–9 GCSEs. This is significantly higher than the national average for alternative provisions.

With the support of our outreach service we work closely with schools to facilitate students who are appropriate for mainstream education being able to return promptly.





Parents say...



Although my daughter has only been at the school a short while, the work they have done with her is remarkable and has really changed her view of education."



I just want to say how grateful myself and my husband are for all the time and effort that all of the teachers and staff have put in to my son. He became a much happier and calmer child when he was with you. A personal thank you to staff who saw our son as a blank canvas rather than being put off by the paperwork. You were also completely non-judgmental, which we appreciate."



Hayes Lane, Bromley, BR2 9EA
Telephone: 020 8290 0274
Email: office@bromleytrust.lseat.org.uk





Midfield Campus

Our Midfield Campus provides education and support for up to 35 pupils aged 5–11, who are at risk of being, or have been, permanently excluded from primary school. We aim to work with these young people to identify and remove barriers to learning, so that where possible they can return to a mainstream school or access a specialist school setting if more appropriate.

Our expert team creates a stimulating, challenging and inspiring learning environment, enabling pupils to develop their independence and decision-making skills. Working in partnership with parents/carers and the pupils themselves, we prepare young people to be successful in the next steps of their educational journeys.

Staff are dedicated, caring professionals who provide unconditional support, challenging pupils to flourish and be the best they can be. Staff use their experience, passion, and commitment to ensure that children feel safe, have high self-esteem and have every opportunity to learn socially and academically.

We prepare our pupils for fulfilling lives in society, where they have the opportunity to go to university, to secure employment, to be leaders in their communities and to live a happy family life.





Parents say...



You have a very lovely school with some beautiful staff members and I can't thank you guys enough, you helped us when nobody else could and for that we will never forget BTA. Thank you."



I cannot begin to tell you how grateful I am for the time my son has spent with you. He came a broken little boy at the end of his sanity (and I did too!) and you spent time with him and you gave him your patience and understanding. You showed him kindness and acceptance when he needed it most. You all together gave me my son back! He's clever, happy and learning again."



Midfield Way, Orpington, Kent, BR5 2QL
Telephone: 020 8308 9620
Email: admin@bromleytrustacademy.org.uk





Alternative Curriculum Campus

This provision opened in September 2019, developed in partnership with London South East Colleges, London Borough of Bromley and the secondary schools within the Borough.

We support pupils who are facing challenges in their mainstream school setting by giving them the opportunity to study an alternative curriculum at our college campus in Bromley. Pupils attend the College two days a week, while remaining on single registration at their mainstream school.

Pupils can choose from several vocational areas including: Hair and Beauty, Multi-Skills (Brickwork, Carpentry, Plumbing and Electrics) and Motor Vehicle. This provides the opportunity for pupils to gain a minimum of a Level 1 qualification in their chosen vocation, with a view to giving them clear line of sight to their next steps and to their future career.

The theory and practical-based lessons relate wholly to the world of work, ensuring our pupils can see the relevance of their learning.

Achievement of pupils in this setting is high, with 100% of our most recent Year 11 cohort achieving at least a Level 1 vocational qualification in Hair & Beauty, Multi-skills, Motor Vehicle and Sport – alongside academic study at their mainstream setting.

Supported by our dedicated team of staff, every Year 11 pupil secured a post-16 destination last year including apprenticeships, semi-professional or professional football academy scholarships or places on a Level 2 course in their chosen vocation at one of London South East Colleges' campuses.





Students say...



The ACC helped me a lot!! Not just with my physical health, but also my mental health."



My thoughts on this course are it has opened up multiple options that you can use in life."



I am very happy with my experience at the college, I enjoyed it a lot and I would recommend it to others."

London South East Colleges - Bromley Rookery Lane, BR2 8HE
Telephone: 020 3954 4000
Email: Office@bromleytrust.lseat.org.uk



Horizons provides high quality support to pupils in Key Stages 1–4 who have been permanently excluded (or are at risk of exclusion) from mainstream school. The school also has a satellite provision located at Endeavour Academy, supporting children with a range of medical needs.

We focus on early intervention, offering a range of services from short term respite to longer term education for students in KS4. Our expert team works intensively with post-16 pupils to secure destinations whilst providing ongoing support. This helps ensure that all pupils can maintain their educational placements, training programmes and/or employment.

Our aim in Key Stages 1–3 is to re-integrate pupils back into a mainstream or specialist school via our 'Refocus programme'. We work closely with external agencies and our partner schools to identify the needs of the child and develop the child's own ability to learn, so that they feel confident about being in the classroom.

We have created an environment and developed a curriculum which supports our pupils to become well rounded citizens and able to productively contribute to the community. We want all our young people to feel confident about their future and in their own ability to live a successful, meaningful life.





Parents say...



Thank you for taking our son under your wing and helping him to fly."



Lensbury Way, Abbey Wood, London SE2 9TA
Telephone: 020 8312 2746
Email: office@horizons.lseat.org.uk



Additional services



Bexley Music (formerly known as Bird College Music Services) became part of our Trust in 2021, delivering music services across Bexley and beyond.

It provides high quality music education for children and young people, giving them access to a range of musical activities and opportunities including: instrumental tuition, choirs, bands, orchestras, performances and tours.

Based at Belmont Academy, Bexley Music is the official music provider for the Borough. As a Trust, we value music across all our settings and recognise the importance of music to whole communities.

For more information visit: www.bexley-music.co.uk



London South East Children's University

Children's University is a national award programme that works in partnership with schools to encourage 5-14 year olds to participate in extra-curricular activities in and outside of school.

This helps develop children's knowledge and skills; nurturing a love of learning while increasing future aspiration and ambition.

As the licence holder for London South East Children's University, we work in schools across Bexley, Bromley and Greenwich. We encourage all our Trust schools to be a part of the scheme to ensure every pupil benefits.

For more information visit: www.lsec.ac.uk/cuhome

Therapy and Wellbeing

Every school in our network is committed to supporting the wellbeing of its pupils. We know that high quality health and wellbeing programmes lead to significant improvements in children's mental health, social and emotional skills and academic success.

Our Therapy and Wellbeing service offers specialised provision for our school communities. We have full time, on-site therapists in most of our schools who manage the provision – with regular input from counsellors, arts therapists and speech & language therapy teams.

Weekly sessions are provided for children who have a sustained need for support as well as discrete, one-off sessions. A range of interventions are offered, either individually or in groups and therapeutic work is tailored according to need.

Our schools also support parents and carers, offering confidential monthly group sessions. These groups provide a place to seek support and connect with others having similar experiences.

Careers Guidance

Our specialist careers advisors help young people to understand their progression options, make appropriate choices and secure positive pathways.

It is our aim to enhance children and young people's prospects and encourage them to contribute to their communities. We are ambitious for all our pupils, with the structure of our education group supporting seamless transition into further education, apprenticeships or other chosen pathways.

We support pupils to secure and attend work placements with a range of employers, ensuring they get real world experience of working environments and develop crucial employability skills and knowledge.

Outreach Services

Our outreach teams support primary and secondary-aged children, their schools and their families across the boroughs of Bromley and Bexley. We focus on preventing avoidable exclusions and support children in mainstream settings to access specialist provision where needed.

Our experienced and varied teams include SENCOs, sports coaches, mentors, educational psychologists, parent practitioners and intervention specialists. They offer bespoke individual care to pupils and their families, including respite and re-integration support, as well as delivering wider training, workshops and awareness programmes.





Ofsted says...



Leaders and local authorities who place pupils at the school are right to have confidence in the school's work. Pupils are receiving a good quality of education"




**LONDON
SOUTH EAST
ACADEMIES
TRUST**

London South East Academies Trust
Rookery Lane,
Bromley
BR2 8HE
Telephone: 020 3954 4000
www.LSEAT.org.uk